

Cambridge Park Public School

Exceptional learning opportunities for all



Term 2 Week 2



Cambridge Learning Community

Bridges to Learning

Thursday 9th May 2019

Upcoming Events:

- **Fri 10 May** — PBL Assembly 3-6
- **Tue 14 May** — Playgroup 9-10.30am
- **Wed 15 May** — Naplan window opens
National day against bullying
- **Thurs 19 May** — Sholastic Book Club orders due
- **Fri 17 May** — Playgroup 9-10.30am
Winter PSSA Starts
PBL Assembly
K-2 Possums
- **Tue 21 May** — Playgroup 9-10.30am
- **Wed 22 May** — Year 1 excursion
Stewart house clothing appeal due
- **Fri 24 May** — PBL Assembly 3-6 Eagles
- **Wed 29 May** — Jersey Day
- **Fri 31 May** — Naplan Window Close
PBL Assembly K-2
- **Thu 6 June** — Science Show K-6
- **Fri 7 June** — PBL Assembly 3-6
- **Wed 12 June** — NAIDOC Fete
- **Fri 19 June** — NAIDOC cup
PBL Assembly K-2

Welcome back to Term 2, 2019.

We hope you all had an enjoyable break and are feeling refreshed and ready to go for another great term of learning together at Cambridge Park.

Excursions

The term has already got off to a flying start with Year 2, 3 & 4 all attending excursions in the first week back. Students are offered a variety of excursions throughout the year that reflects the learning that takes place within the classroom. Where possible we encourage as many students as attend these excursions and camps, as it offers great opportunities for students to take their learning from the paper and see it, in a real life context. Excursions create opportunities for students to return to school and use their authentic learning experiences for class writing and talking circles.



Zone Cross Country

Congratulations to all the students who represented Cambridge Park Public School at the Penrith Zone Cross Country Carnival yesterday. The students all showed great sportsmanship and effort and we will publish some of the results in the coming weeks newsletter once available.

NAPLAN

A reminder to all Year 3 and 5 parents that Week 3 and 4 are NAPLAN weeks at our school. All students in Year 3 and 5 (unless withdrawn by parent) will be

completing the NAPLAN assessment online throughout this 10 day period. If you are aware that your child will be absent at all through this period or have any questions regarding the NAPLAN assessment please make an appointment to talk to your child's teacher.

Opportunity Class Placement 2020

The application process for Year 5 opportunity class placement in 2020 is about to begin.

Important dates in the application process are as follows:

Tuesday 30 April 2019: Online applications open

Friday 17 May 2019: Online applications close (Parents and carers must apply by the due date.)

Wednesday 31 July

2019: Opportunity Class Placement Test

Parents and carers must apply online between **Tuesday 30 April and Friday 17 May 2019** at:

<https://education.nsw.gov.au/public-schools/selective-high-schools-and-opportunity-classes/year-5>

Interested parents and carers must read *Information about applying for Year 5 entry to an opportunity class in 2020* available at:

<https://education.nsw.gov.au/public-schools/selective-high-schools-and-opportunity-classes/year-5/information-for-applicants>

We look forward to seeing you around the school

Mrs Binns
Principal

Mr Bourke
Deputy Principal

Traditional and innovative teaching in well-managed classrooms

Kindergarten

Welcome back everyone! Hopefully you all had a great holiday and an exciting Easter! We have begun another busy term and everyone has settled back into routine very well.

Homework and home reading began this week. Letters have been sent home explaining the homework routine and home reader procedure. If, for some reason you have not received either of these, we will be happy to re send.

We will also send a note home at a later date, outlining some Speaking & Listening topics for the students to plan. These will be related to this terms Geography and Science units.

Kindergarten Sport day has changed to Tuesday for this term, as we are working with Stage 3 for our Fundamental Movement activities. The Kindergarten

teachers will be supervising selected Stage 3 students in leading these activities.

As the weather is cooling down, please label all jumpers for easy return to students. It's cold in the morning but warms up during the day. Often jumpers and jackets are taken off, and sometimes misplaced. Labels help us to find the owners more easily! Please continue to remind your child to bring a hat to school.

The Week 3 PBL Assembly will feature an item presented by the Possums. We look forward to seeing you all there after Recess!

Mrs Wallace
Kindergarten Supervisor

Stage 1 Newsletter

The students have settled back into Term 2 very quickly and we are looking forward to a busy and exciting term.

Year 1 sports day is now Thursday. This term we will be focusing on fundamental movement skills which will involve running, skipping, jumping, throwing and catching. Can you please ensure that your child is appropriately dressed to participate in sport, including sports shoes and a hat.

Year 2 had a great time at their excursion to Vaucluse House last week. The tour guides were very impressed with the student's knowledge, enthusiasm and behaviour as they went on an amazing journey "into the past."

The Year 1 excursion note was sent home at the end of Term 1. If you have not received a note, you can get one at the office. We have planned a great day touring some historical sites around Penrith including a visit to the Arms of Australia Museum.

Mrs Junge and Mrs Senkbeil
Stage 1 Supervisors

STAGE 3 NEWS

Welcome back to Term 2. I hope everyone had a relaxing and restful break. We have an exciting term ahead and we look forward to seeing our students challenge themselves to try new things.

Year 6 shirts have arrived and the students are already wearing them and they look fantastic.

Thank-you for your patience in awaiting their arrival.

Camp is coming up this term in week 9 and we still have spots available for those students who still wish to attend. It is always a great camp, with new relationships built between students and it also provides students with opportunities to challenge themselves in activities that they would not normally have the confidence to do. Please come and see me if you require another note. **Please remember that final payment is due on Friday the 7th of June.** You can pay the camp off in instalments at the front office or online.

In the next couple of weeks, I will endeavour to get a list of equipment needed so you can start to prepare for the camp

Winter PSSA trials have taken place. Those students who were successful, should have received a note which needs to be bought back to their coach.

The sports for winter include: Netball, Soccer , AFL and Rugby League. If your child commits to a team it is important that they are there for every game unless sick. Please ensure all monies are paid to the front office. If a child is on a Level 2 or higher, they are unable to attend for two weeks. All students will be required to sign a Code of Conduct.

Please remember if you have any concerns or if there are any issues at school between children that you let myself or the students class teacher know so we can ensure every child is feeling happy and safe at school.

Mrs Hansen
Stage Supervisor

Cambridge Park Bottle Cap Mural Project

Students at Cambridge Park take part in art and environmental education lessons delivered by the RFF teachers. As an extension to these programs we are putting together a mural with a theme around the native animals or plants in our area.

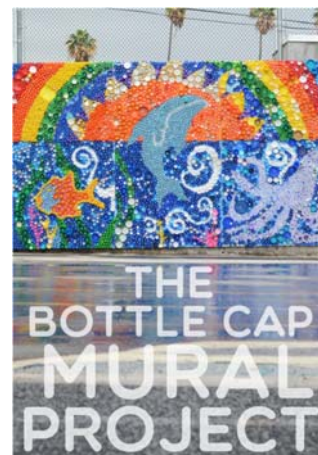
To do this we will need thousands of bottle caps to make up a large mural. To date we have already collected a substantial amount but of course we will need more.

The caps can come from water bottles, milk lids, lids from vegemite jars and so on. We will need all sizes and of course clean ones please. Students will be involved in counting and sorting lids as well as preparing the base board and then screwing the lids on. Thank you to all of the parents and children who have collected lids so far.

I will place white baskets at different spots in the

playground for the lids to be deposited into. Thank you again for all of your support in helping us make this a wonderful experience for all of your children.

Mrs Clack
RFF Supervisor



Coding and Robotics Club

Our new Coding and Robotics club is now up and running and students will be able to experience a range of coding activities, including scratch and Minecraft for Education, alongside our existing Blue Bots in our newly refurbished Makerspace/Computer Lab. The K-2 Coding club will be on Tuesdays at lunchtime and the 3-6 Coding club will be on Thursdays at lunchtime in the Redbacks room.

Students are provided with multiple opportunities to extend their inquiry, ICT and critical and creative thinking skills.

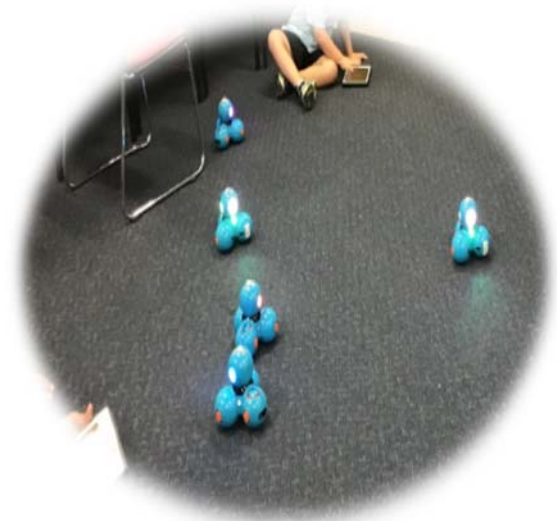


We are grateful for the opportunity to participate in the DOE STEMShare community utilising their STEMShare library which enables schools to borrow robotics and coding equipment.

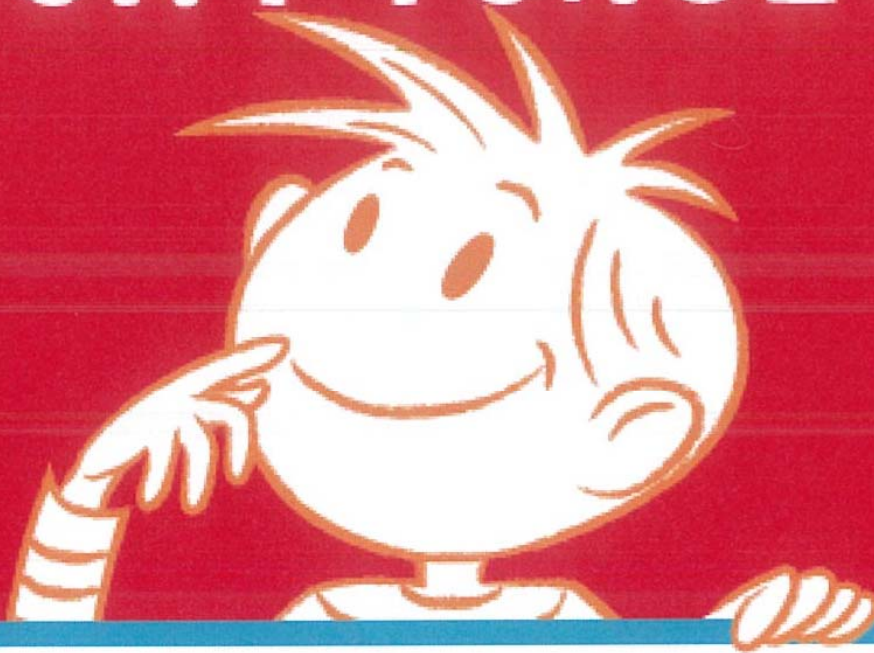
This provides opportunities for students to experience a range of future focussed equipment at no cost to the school. We currently have a Tablet Robotics Kit on loan to us which includes Dash robots, Blue Bot robots, Lego WeDo and STEM iPads.

“Empowering schools to teach students the skills to solve the problems of tomorrow”

If parents are concerned about any aspect of online safety here is a link to the esafety website with more information:
<https://www.esafety.gov.au/parents/online-safety-guide>



DON'T FORGET!



SCHOLASTIC

Book Club

orders are due:

16th May 2019



ABN 47 083 674 613
Unit 20 / 14-16 Stanton Road, SEVEN HILLS NSW 2147
Phone: (02) 9674 9824 Fax: (02) 8602 5399
e-mail: enquiries@theschoolphotographer.com.au



6th May 2019

Cambridge Park Public School

REORDER PHOTOS

Please find below, a list of all the sports/special photographs available.

These can be viewed and ordered online at
www.theschoolphotographer.com.au using the Online Order Code below:

19S1758EL40CP

Cash orders can be made using an Order Envelope –
complete details, enclose payment and return to school before the due date

The photo prices are:
\$16.00 each, 2 for \$30.00, 3 for \$42.00, 4 for \$52.00 or 5 for \$60.00

Any additional photographs are \$10.00 each. This discount is only available
per family order.

NOTE: Online orders do NOT require an order envelope

Orders due by **3rd June 2019**

Name of Group	Name of Group
Joeys and Pre School	Library Monitors
School Leaders	SRC
Year 6	Year 6 FUN



Stewart House and The Smith Family Clothing Appeal bags have been given to students. If you have any unwanted clothing, shoes, manchester or

blankets in good, clean, wearable condition, please consider filling the bags and returning to school by **Wednesday 22 May, 2019.**

The bags can be left at the office each morning. Your donation helps both Stewart House and The Smith Family to raise much needed funds to continue to support disadvantaged families.

Important information for parents and Students

The Department recognises that some families will be subject to family breakdown. In the absence of any notification to the contrary, it will be assumed that both parents retain a shared and equal parental responsibility for their children and have been involved in making any decisions regarding their children's education.

This means that the school will recognise that each parent has equal duties, obligations responsibilities and opportunities in relation to matters involving the school.

If any changes occur in your family relationships which have the potential to impact on the relationship between the school and your family, you are required to advise the school immediately. This includes providing copies of any court orders that may be obtained.

Anaphylaxis and Us

As mentioned in previous newsletters we have several children and staff members at our school who are anaphylactic. If you are sending food to school to be shared with other children eg: birthday cakes or cakes for sale, please be very careful to read the ingredients and ensure that they do not contain peanuts, tree nuts and nut products. Some of our children are also allergic to eggs and milk.

Please also send in the packet ingredients so that we can check them for ourselves.

Other ways to support us to keep everyone safe are:

1. Talk to your children about allergies and how serious they can be for some people so they must not ever share their food with other children. Its not mean to not share food its keeping people safe.
2. Discuss how important it is to wash hands before and after eating so that food allergens don't get transferred onto other people or their food.

Thank you for working with us to keep our children safe.

CAMBRIDGE PARK PUBLIC SCHOOL

PO Box 8021
WERRINGTON COUNTY NSW 2747

35 Oxford Street CAMBRIDGE PARK

Phone: 4721 2556
Fax: 4721 7567
E-mail:
cambridgpk-p.school@det.nsw.edu.au
Website:
www.cambridgpk-p.schools.nsw.edu.au
School Security:
1300 880 021



OUR SCHOOL

Expectations

To Be **Safe**

To show **Respect**

To be **Active**
Learners



.....xxx.....xxx.....

For your convenience when your child is absent from school please complete the note below and return to your child's teacher

ABSENCE EXPLANATION NOTE

STUDENT'S NAME CLASS.....

DATES OF ABSENCE

REASON.....

.....

PARENT/CAREGIVER'S NAME

SIGNED DATE

Environmental Education Team Bulletin

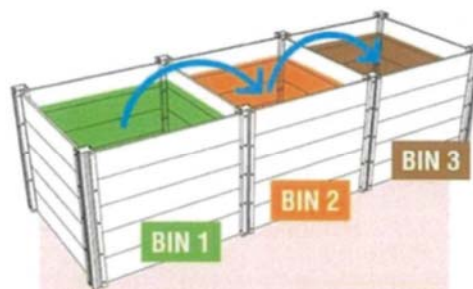


What's new in Term 2?

We are happy to announce that our Straw Bale Garden Area has had an upgrade and now has three extra large garden beds set up just in time for the kids to grow some lovely Winter crops in!



This term the CPPS GREEN TEAM will be installing the school's first permanent composting system. This will be a large x3 bay system, designed to show our kids the stages of decomposition and how they can turn their kitchen and garden scraps into something useful.



Our school's worm farm will also be getting an upgrade this term. This will give our staff and students the ability to create free organic fertilizer and castings to enrich the soil quality of the school's gardens and even offer up extra stock for donation at our Support Unit Market Gardens.

Produce large amounts with a 3 BIN COMPOSTING SYSTEM

BIN 1: Fill with brown and green waste layers until full. Once it has gone down by half or more, take the top layer and put it into Bin 2. Continue until Bin 1 is empty and start Bin 1 as new. ➔ **BIN 2:** When it no longer looks like the waste you put in, move Bin 2 contents into Bin 3. ➔ **BIN 3:** Holds the finished compost for use around the garden, mulching where the plants are growing the most vigorously.

The CPPS GREEN TEAM has also been introducing a new bin system in our school's playgrounds.

You may have noticed the bright new red, yellow and now blue bins?

The system is

Red bin: General waste for landfill

Yellow bin: Paper and cardboard for recycling

Blue bin: Return and earn bottles and poppers



Mrs Wade & Mr Giblin

Traditional and innovative teaching in well-managed classrooms